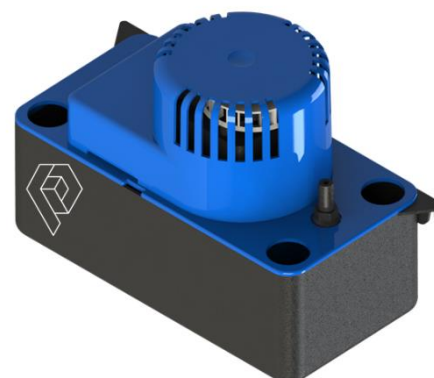


Condensate pump

KP 52

Data sheet



Technical data	
Supply voltage / frequency	230 V AC / 50 Hz
Connected load / rated current	115 W / 1.2 A
Connection cable length	Mains cable: 2 m Alarm cable: 2 m
Insulation class	B
Protection class	IP 20
Operating mode	S3 30% - Intermittent operation: 3s ON - 7s OFF
Alarm contact	NC contact 4 A resistive load - 250 V (NC)
Permissible medium temperature	Max. 50 °C
Permissible medium	Condensate water, pH > 2.5
Maximum head	6.5 m
Maximum flow rate	500 l/h
Sound pressure level	45 dBA at 1 m distance
Container volume	2.2 l
Weight	2.06 kg
Wide condensate pump	257 mm
Height condensate pump	181 mm
Deep condensate pump	126 mm
Height of condensate inlet	95 mm
Condensate inlet	Ø 29 mm
Condensate drain with non-return valve	Ø 10 mm
Drain hose	5m drain hose Ø 10 mm

